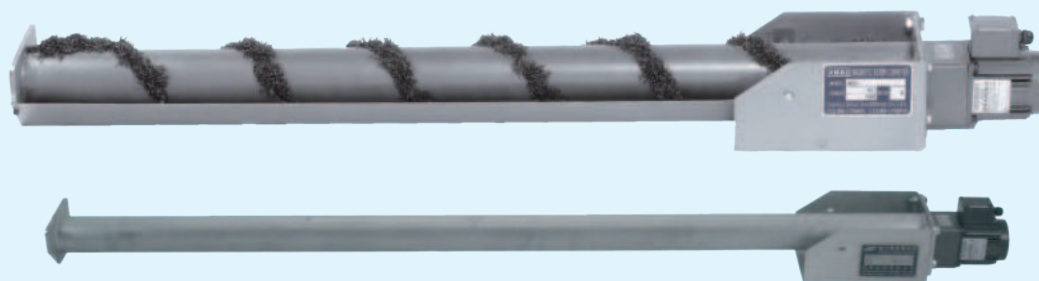


## MAGNETIC SCREW CONVEYER

### 磁性螺旋輸送機

MSC



#### Application

- For removing and conveying metal chips left on broaching machines, sawing machines, gear hobbing machines and cut-off machines.
- For collecting and conveying tiny stamped parts, such as nuts and washers etc.
- Suitable for removing and conveying metal chips after processing for the cast-iron workpiece.

#### 用途

- 拉床、滾齒機、鋸床、切斷機等加工機械切削鐵屑搬送分離。
- 螺帽、華司、鍊條等細小衝壓件搬送收集。
- 鑄鐵材料切削屑搬送清除效果最佳。

#### Example



Gundrill Machine



Cut-Off Machine



Sawing Machine

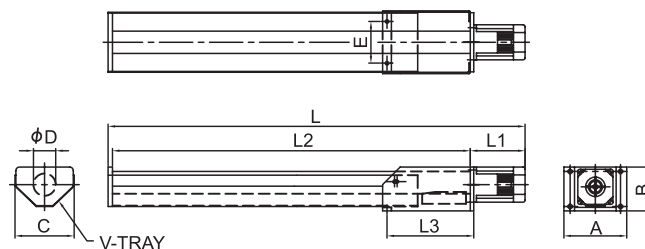


Hobbing Machine

# MAGNETIC SCREW CONVEYER

## 磁性螺旋输送机

### MSC50



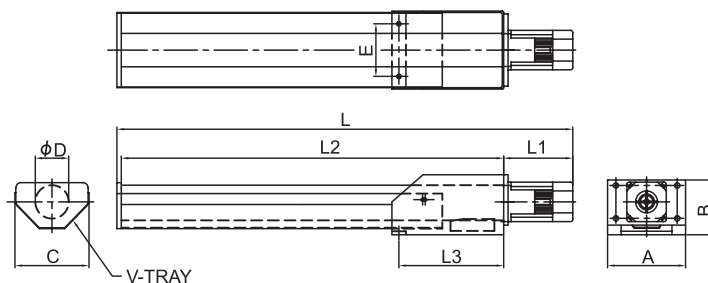
### Specification

Unit(mm)

Size Model	Nominal Dimension	Dimension									Motor	Power Source	Rotation	Capacity
		A	B	C	D	E	L	L1	L2	L3				
MSC5005	Ø50x500 <sup>st</sup>	143	100	135	Ø50	95 2xM8	625	117	500	200	25W	3Phase AC 200V/380V	30/36Rpm. 50/60Hz	60kg/hr
MSC5008	Ø50x800 <sup>st</sup>						925		800					
MSC5010	Ø50x1000 <sup>st</sup>						1125		1000					

With different size can be custom-made

### MSC75



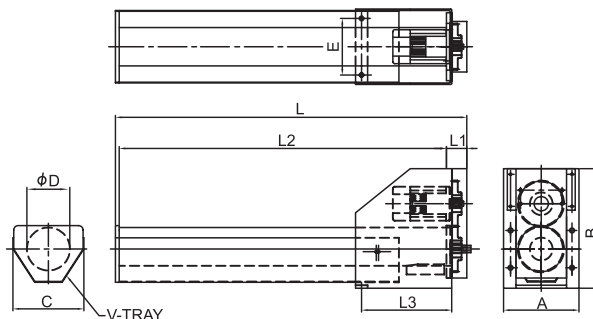
### Specification

Unit(mm)

Size Model	Nominal Dimension	Dimension									Motor	Power Source	Rotation	Capacity
		A	B	C	D	E	L	L1	L2	L3				
MSC7508	Ø75x800 <sup>st</sup>	178	125	169	Ø76	120 2xM10	950	142	800	255	25W	3Phase AC 200V/380V	30/36Rpm. 50/60Hz	100kg/hr
MSC7510	Ø75x1000 <sup>st</sup>						1150		1000					
MSC7512	Ø75x1200 <sup>st</sup>						1350		1200					
MSC7515	Ø75x1500 <sup>st</sup>						1650		1500					
MSC7518	Ø75x1800 <sup>st</sup>						1950		1800					
MSC7520	Ø75x2000 <sup>st</sup>						2150		2000					

With different size can be custom-made

### MSC100



### Specification

Unit(mm)

Size Model	Nominal Dimension	Dimension									Motor	Power Source	Rotation	Capacity
		A	B	C	D	E	L	L1	L2	L3				
MSC1015	Ø101x1500 <sup>st</sup>	200	317	188	Ø101	150 2xM10	1564	54	1500	255	60W	3Phase AC 200V/380V	30/36Rpm. 50/60Hz	200kg/hr
MSC1020	Ø101x2000 <sup>st</sup>						2064		2000					
MSC1025	Ø101x2500 <sup>st</sup>						2564		2500					
MSC1030	Ø101x3000 <sup>st</sup>						3064		3000					

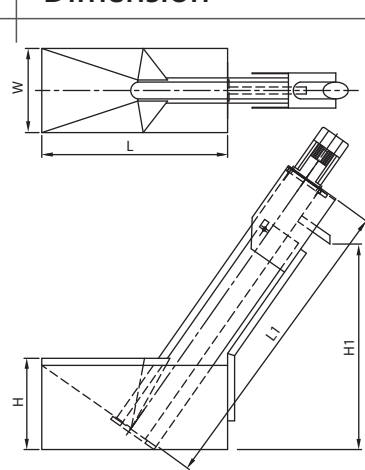
With different size can be custom-made

## STANDARD MAGNETIC SCREW CONVEYER UNIT 標準型磁性螺旋輸送機單元組合

LSC-100



### Dimension



### Application

- ▶ Application for Broaching Machine, Gear Hobbing Machine and Band Sawing Machine etc.
- ▶ Filtration accuracy is within 50 μm.
- ▶ The length of iron scraps is within 100mm.
- ▶ Capacity: Water-based lubrication coolant: 200 ℓ/min  
Cutting oil: 120 ℓ/min.

### 用途

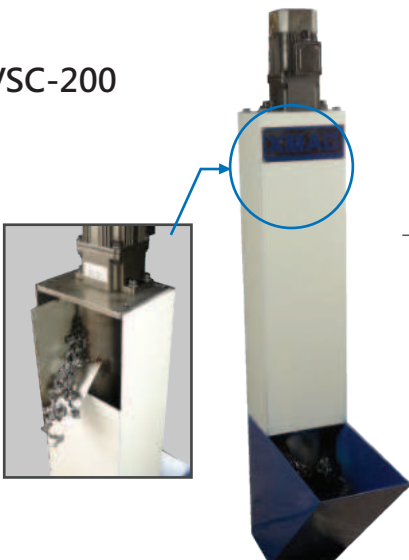
- ▶ 適合使用於拉床、齒輪切割機、切斷機等機器設備。
- ▶ 磁性體切削屑分離過濾精度50 μm。
- ▶ 搬送切削屑長度100mm以下。
- ▶ 處理能力:水溶性切削液200 ℓ/min  
切削油120 ℓ/min

### Specification

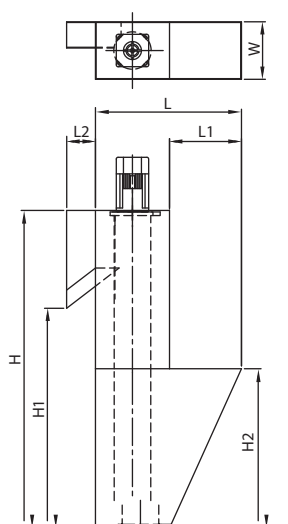
Model	Size	Capacity (kg/hr)	Dimension				Weight	
			L	W	H	L1	H1	(KG)
LSC-100		100	480	400	285	1200	1000	50

## VERTICAL MAGNETIC SCREW CONVEYER UNIT 立式磁性螺旋輸送機單元組合

VSC-200



### Dimension



### Application

- ▶ Application for Broaching Machine, Gear Hobbing Machine and Band Sawing Machine etc.
- ▶ Filtration accuracy is within 50 μm.
- ▶ The length of iron scraps is within 100mm.
- ▶ Capacity: Water-based lubrication coolant: 200 ℓ/min  
Cutting oil: 120 ℓ/min.

### 用途

- ▶ 適合使用於拉床、齒輪切割機、切斷機等機器設備。
- ▶ 磁性體切削屑分離過濾精度50 μm。
- ▶ 搬送切削屑長度100mm以下。
- ▶ 處理能力:水溶性切削液200 ℓ/min  
切削油120 ℓ/min

### Specification

Model	Size	Capacity (kg/hr)	Dimension						Weight	
			L	W	H	L1	L2	H1	H2	(KG)
VSC-200		200	590	190	1020	450	60	800	320	70

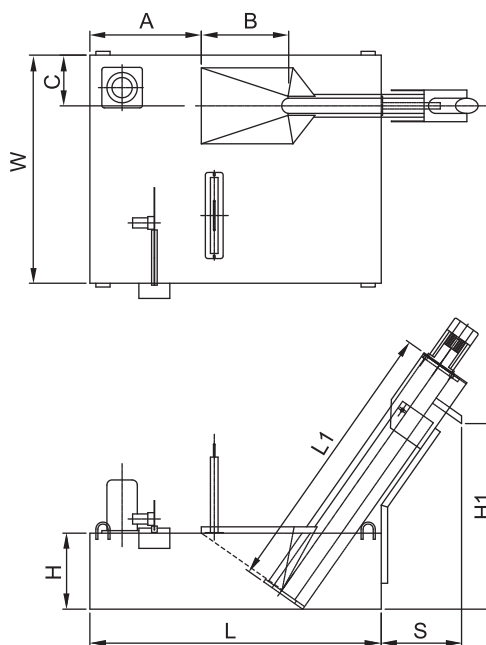
# COOLANT SYSTEM & MAGNETIC SCREW CONVEYER

## 切削液冷卻系統 & 磁性螺旋輸送機

TSC



### Dimension



### Application

- Ⓛ Application for Broaching Machine, Gear Hobbing Machine and Band Sawing Machine etc.
- Ⓛ Filtration accuracy is within 50 μm.
- Ⓛ The length of iron scraps is within 100mm.
- Ⓛ Capacity: Water-based lubrication coolant: 200 ℓ/min  
Cutting oil: 120 ℓ/min.

### 用途

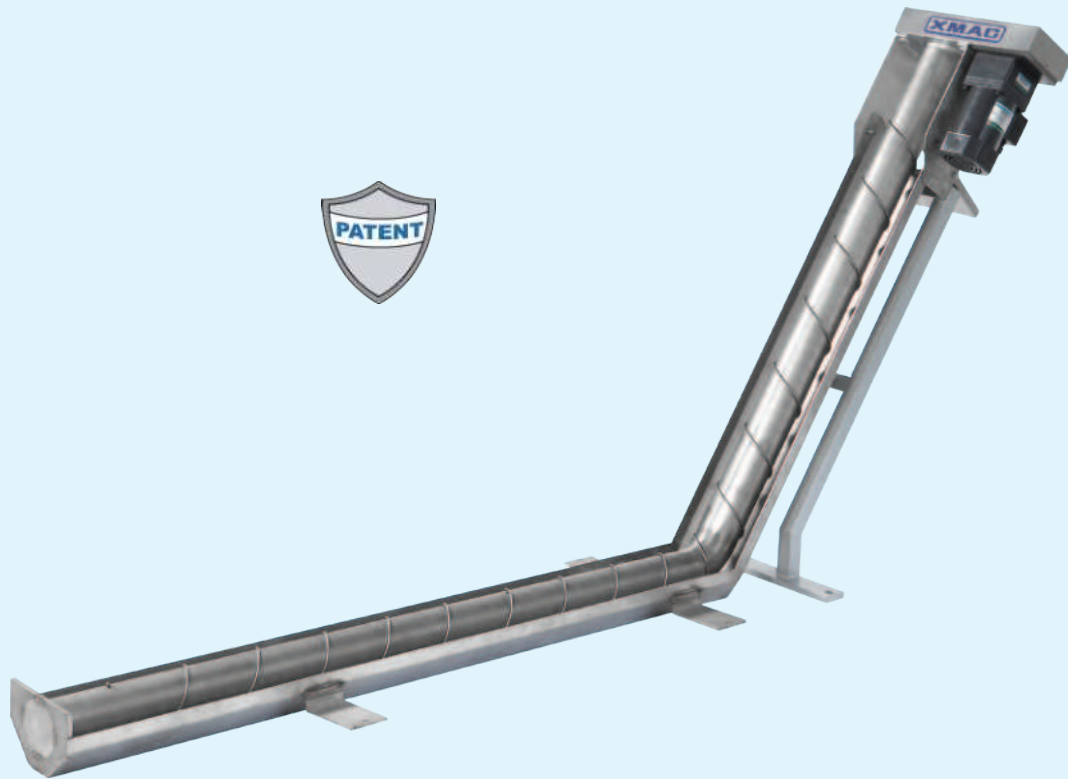
- Ⓛ 適合使用於拉床、齒輪切割機、切斷機等機器設備。
- Ⓛ 磁性體切削屑分離過濾精度50 μm。
- Ⓛ 搬送切削屑長度100mm以下。
- Ⓛ 處理能力:水溶性切削液200 ℓ/min  
切削油120 ℓ/min

### Specification

Size Model	Capacity (ℓ/ Min.)	Body Dimention							Tank Dimension			Tank (ℓ)	Weight (KG)
		L1	W1	H1	A	B	C	S	L	W	H		
TSC-A1	100	1190	300	860	190	300	200	190	900	1150	300	250	250
TSC-A2	100	1190	300	860	440	300	200	190	1150	900	300	250	250

Unit(mm)

## L TYPE MAGNETIC SCREW CONVEYER L型磁性螺旋輸送機



### Feature

- ▶ Transport wet or dry ferrous chips, scraps or parts.
- ▶ Patent design for transport system ensures to convey the scraps smoothly.
- ▶ Low energy consumption and light duty construction.
- ▶ Made of stainless steel and ensure the durability.
- ▶ Jam free operation by smooth surface.

### Application

- The L type magnetic screw conveyor is used to transport a wide variety of scraps, chips and parts in different industry.
- ▶ Metal working industry
- ▶ Recycling plants
- ▶ Scraps material processing
- ▶ Chemical industry
- ▶ Mining Industry
- ▶ Auto parts industry

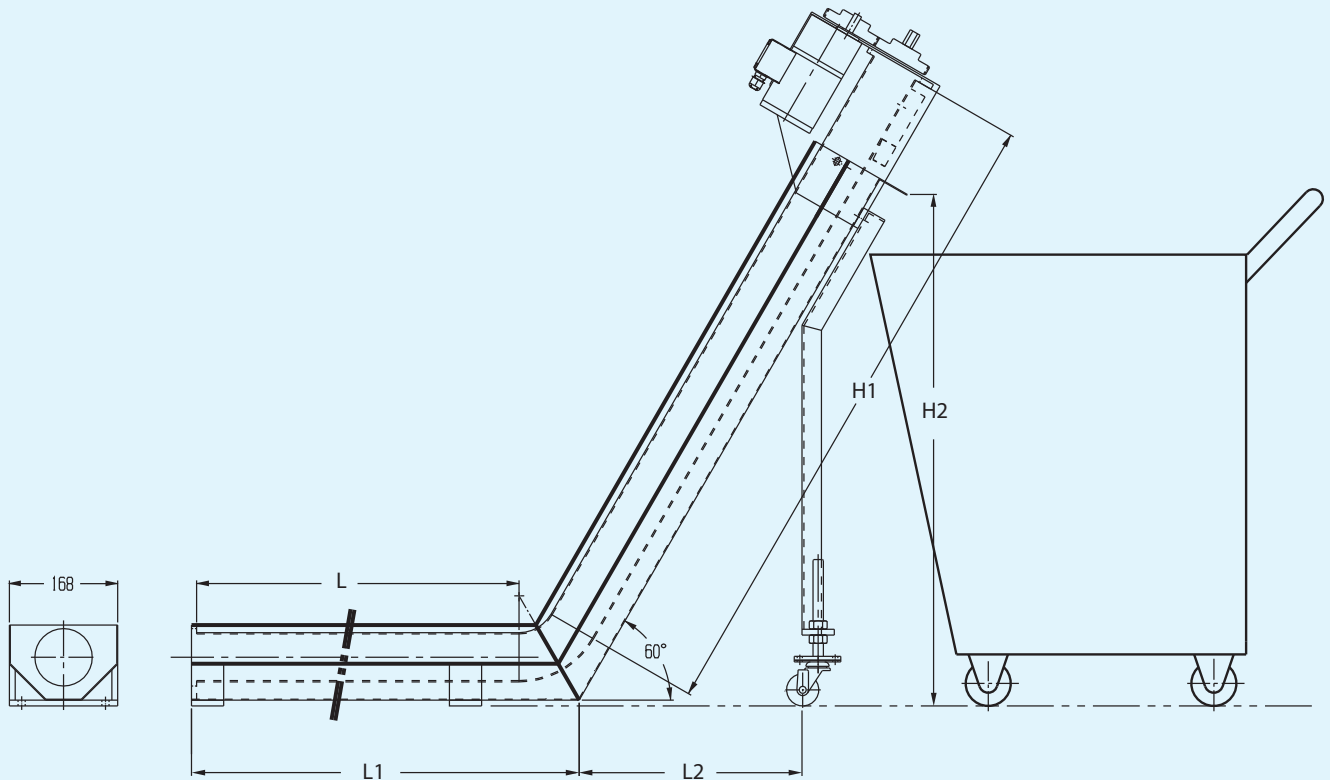
### 性能

- ▶ 不論乾燥或潮濕，含有鐵質之切削屑或零組件皆可輸送。
- ▶ L型專利結構設計，可確保輸送順暢。
- ▶ 低能源消耗、輕量化結構。
- ▶ 全機不鏽鋼製造，具耐久性。
- ▶ 運作中永不堵塞。

### 用途

- L型磁性螺旋輸送機可輸送各類型切削鐵屑、零組件，並用於以下不同產業。
- ▶ 金屬加工產業
- ▶ 資源回收產業
- ▶ 金屬切削處理
- ▶ 化學產業
- ▶ 汽車零組件產業
- ▶ 礦業

## Dimension



## Specification

Unit(mm)

Model	Size	L	L2	H1	H2	Degree
LMSC-1000.1000		1000	Optional	1000	850	60°
LMSC-1100.1000		1100		1000	850	
LMSC-1200.1000		1200		1000	850	
LMSC-1300.1000		1300		1000	850	
LMSC-1000.1200		1000		1200	1020	
LMSC-1100.1200		1100		1200	1020	
LMSC-1200.1200		1200		1200	1020	

## Example

